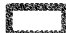






Attachment 1

	A	B	C	D	E	F	G
01	SOURCE NAME	TO TRIBUTARY	TOWNSHIP	RANGE	SECTION	QQ	SURVEY CODE AND NUMBER
02	Magee Creek	Tepee Creek	52N	02E	17	NWSW	
03	Tepee Creek	North Fork Coeur d'Alene River	52N	02E	17	NWSW	
04	Magee Creek	Tepee Creek	52N	02E	18	NESE	
05	Tepee Creek	North Fork Coeur d'Alene River	52N	02E	18	NESE	
06	Tepee Creek	North Fork Coeur d'Alene River	52N	02E	18	SESE	
07	Unnamed Stream	Tepee Creek	52N	02E	18	SESE	
08	Tepee Creek	North Fork Coeur d'Alene River	52N	02E	19		
09	Trail Creek	Tepee Creek	52N	02E	19		
10	Unnamed Stream	Tepee Creek	52N	02E	19		

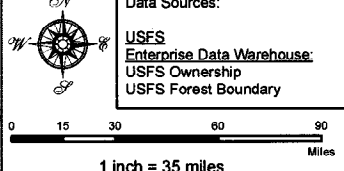
Attachment 2
 Place of Use Map Fire Suppression - Water Right No. 94-09518D
 National Forests in Idaho and the Kaniksu, Lolo and Kootenai NF in Montana

Key to Features

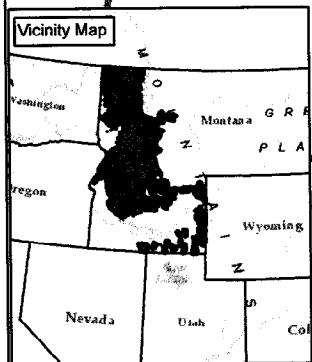
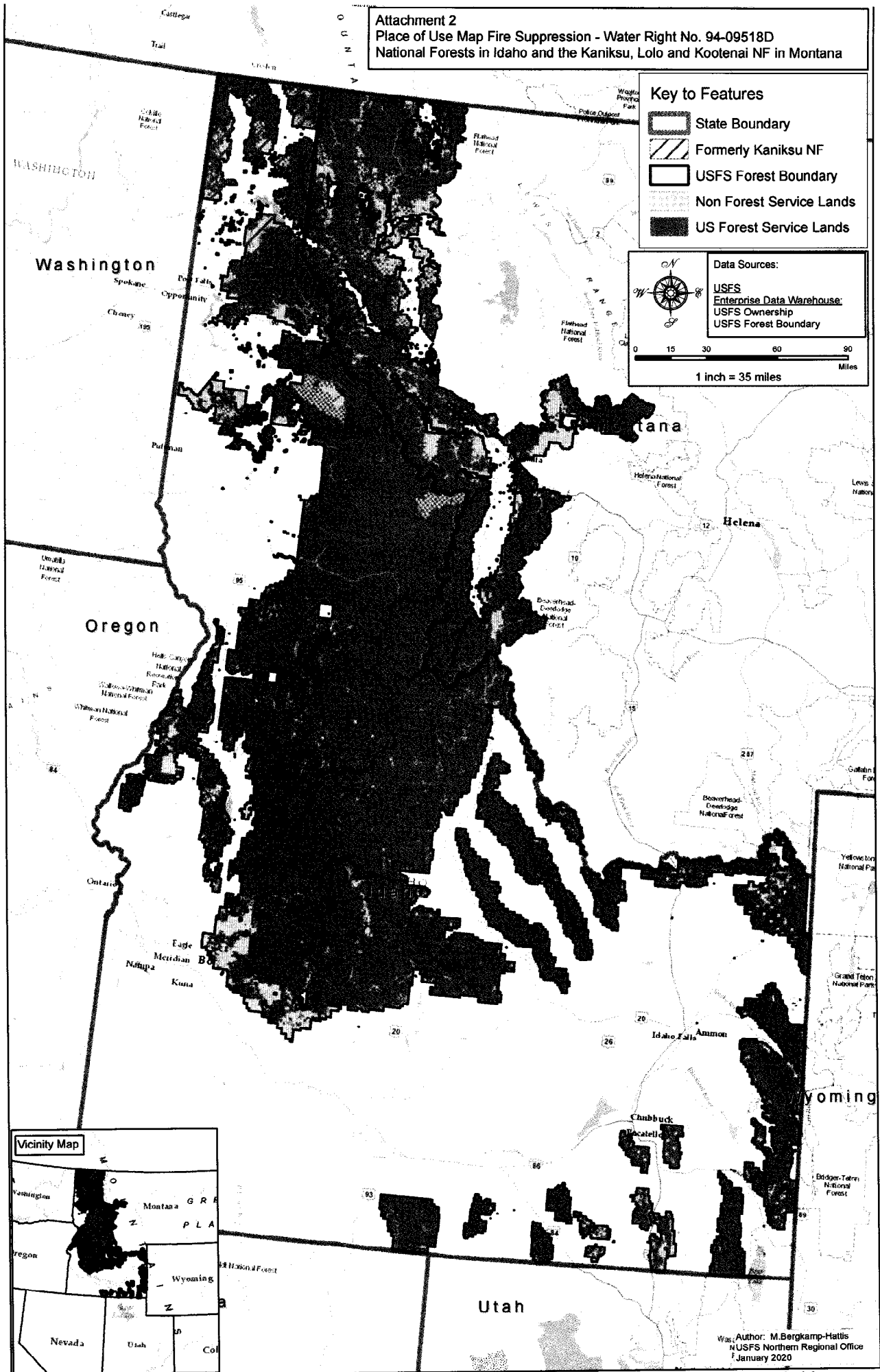
-  State Boundary
-  Formerly Kaniksu NF
-  USFS Forest Boundary
-  Non Forest Service Lands
-  US Forest Service Lands

Data Sources:

- USFS
- Enterprise Data Warehouse
- USFS Ownership
- USFS Forest Boundary



1 inch = 35 miles



Author: M. Bergkamp-Hattis
 NUSFS Northern Regional Office
 January 2020